



## St Mary's Church of England Primary School

Dear Parents and Carers,

### **Supporting Our Community Through Safe and Considerate Parking**

To help us maintain **positive relationships** with our neighbours and ensure the **safety** of everyone arriving at school, we kindly remind families not to block the entrances to the school grounds or the car park. These **access points must always remain clear**.

Please also remember that **double yellow lines** are there to protect visibility and prevent hazards. Stopping on or near them can put **pedestrians**—especially **children** walking to school—and other **road users at risk**.

**Your cooperation helps keep our community safe and our school environment welcoming for all.**

It is the **responsibility** of all the community to maintain a supportive environment for everyone. 😊

### **Values**

- St Mary's Christian Values for the **spring term** are **wisdom, responsibility and honesty**.
- Our school Bible quote which we aspire for all children and adults to achieve is **'I instruct you in the way of wisdom and lead you along straight paths.'** (Proverbs 4:11)

## Parent News Section 1,

### Celebrating Unity Through Our Shared Values

As we move through a season filled with **meaningful cultural and religious observances**, it's a powerful reminder of how much stronger we are when we recognise both what makes us **unique** and what we **share**.

Our community thrives when we **honour** one another's **traditions** with **curiosity**, **respect**, and genuine **appreciation**.

Many of the celebrations at this time of year invite **reflection, renewal, and compassion**—values that resonate across cultures and faiths.

**Lent** marks a period of **preparation** and **self-reflection** for many **Christians**, often observed through fasting, prayer, and acts of generosity.

This spirit of discipline and mindfulness echoes practices in other religions. **Ramadan** is the Islamic month in which **Muslims** fast from dawn to sunset to cultivate gratitude, empathy, and spiritual focus.

**Fasting** itself is a **thread that runs through many religions**, symbolising renewal, humility, and a deeper connection to one's values.



## Parent News Section 2,

### Celebrating Unity Through Our Shared Values

Recognising these **shared themes** helps us appreciate the **common ground** that exists beneath our **diverse practices**. When we **celebrate** each other's special events—whether cultural, spiritual, or personal—we **strengthen** the sense of unity that defines our **community**.

With that in mind, we extend **warm wishes** to everyone marking significant occasions at this time of year.

- **Blessed Lent and a meaningful Shrove Tuesday** to those observing this period of preparation.
- **Happy Lunar New Year** to all welcoming a season of renewal and good fortune.
- **Ramadan Mubarak** to those preparing for a month of reflection and community.
- And to everyone enjoying the **February half-term break**, we hope it brings rest and joy. We look forward to welcoming children back to school on **Monday 23/02/2026**.

**May these celebrations—each distinct, each meaningful—remind us of the richness of our shared values and the importance of supporting one another.**



## Parent News Section 3,

### Raising Money for Charity-NSPCC Number Day

A heartfelt **thank-you** to all the parents and children who supported **NSPCC Number Day on Friday 06/02/2026**.

It was wonderful to see children and staff embracing the theme with such enthusiasm. The creativity on display in the number-themed outfits highlighted the fun and importance of maths in our everyday lives.

**Our Office team really got into the spirit and made sure their outfits were all about maths!**

We are also grateful for the **generosity** of our families who kindly donated to this valuable cause. **Your support makes a real difference.**

Keep an eye out for details of our **post-half-term bake sale**, led by civic-minded **Year 4 children** and supported by our **Vice Chair of Governors, Mrs Chaudhry**, where all funds raised will also go towards supporting the **NSPCC**.

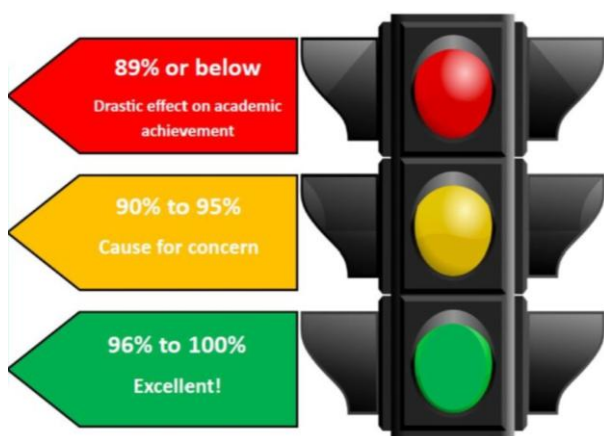
**Watch this space for more information!**



## Parent News Section 4,

### Absence

- Attending school every day is important for children to learn well.
- On the rare occasion children are absent, please report this on our **Study Bugs** system.
- If reporting your child's absence, clearly state your child's **name**, **year group**, **class** and the **reason why** your child is absent. We ask that you are **specific about your child's illness** so we can recognise trends and local outbreaks.
- We do not authorise holidays during term time, and you may be fined through the authority.
- Please try to arrange appointments out of school hours. If this is not possible, please email the school office with conformation of the appointment: [officestaff@stmarys.slough.sch.uk](mailto:officestaff@stmarys.slough.sch.uk)
- Well done to **10** classes who achieved **96%** or more attendance last week!
- Well done to: **Damson, Cherry, Peach, Ash, Sycamore, Beech, Oak, Hazel, Elm and Willow classes!!**
- **Special well done to Elm class who achieved 100% this week!**



**GATES OPEN: 08:20 am**

**GATES CLOSE: 08:30 am**

Children **must** be in class, registered and ready for learning at **08.30am**.

Please avoid lateness as this impacts on the front office and a calm start to your child's day.

## Attendance Competition



We are repeating our attendance competition again this year. It is open to everyone who attends St Mary's school.

All children who achieve **100%** and flourish in their school attendance will be receiving a **special certificate** to thank them for coming to school every day for a **whole term**.

Those who achieve **100% for the whole year** will receive a special celebration and receive some prizes.

They will automatically be entered into a draw where one lucky family will win a summer **family day** out for **four** to **Legoland**.

### Good luck everyone!



## Attendance for last week

Nursery AM	78.5%
Nursery PM	85.6%
0Poppy	88.7%
0Bluebell	95.0%
0Daffodil	89.0%
<b>1Damson</b>	<b>96.0%</b>
<b>1Cherry</b>	<b>96.6%</b>
1Apple	88.3%
2Pear	90.3%
2Plum	88.0%
<b>2Peach</b>	<b>98.7%</b>
<b>3Ash</b>	<b>98.6%</b>
<b>3Sycamore</b>	<b>98.6%</b>
3Juniper	92.0%
4Larch	91.2%
<b>4Beech</b>	<b>96.0%</b>
<b>4Oak</b>	<b>96.7%</b>
<b>5Hazel</b>	<b>97.3%</b>
5Alder	93.5%
<b>5Elm</b>	<b>100%</b>
<b>6Willow</b>	<b>96.7%</b>
6Maple	95.0%
6Rowan	95.0%

**96% or more is the target.**

**Classes with 100% attendance for the week earn a collective reward! 2 classes have earned the reward so far this year.**

**The senior leadership team have pledged that if 5 classes achieve 100% in the same week, they will come to school wearing superhero costumes!** Please bring your child to school every day 😊

# Reception News, Section 1

## Maths Week-Reception Maths Workshop

Thank you so much for attending our **Maths Workshop**.

We truly appreciate the **parents** who took time out of their busy schedules to join us. It was wonderful to see our parents engaged, asking questions, and exploring the ways we can work together to support the children's mathematical learning.

**Parents' enthusiasm and involvement** make a huge difference, and we loved having the opportunity to share **practical strategies** that can be used both in school and at home to support your child to **learn maths**. We hope parents found the session helpful and enjoyable.

**Thank you once again for your continued support.**

**Reception Team**



## Reception News, Section 2

### Maths Week-Practical maths in Reception

Last week we went on a shopping trip to buy the fruit we read about in the book 'Handa's Surprise'.

We all wore Hi-Vis jackets to keep us **safe**. We looked through the **doors** or **windows** of various shops in our **local community** and talked about what we could buy in them. We were very excited to discover **exotic fruits** such as **guava**, **mango** and **pineapple** in a fruit store. We enjoyed the experience of handing over **money** and getting **change** at the till.

This fitted in well with **Number Week**.

### Reception Team



## Reception News, Section 3

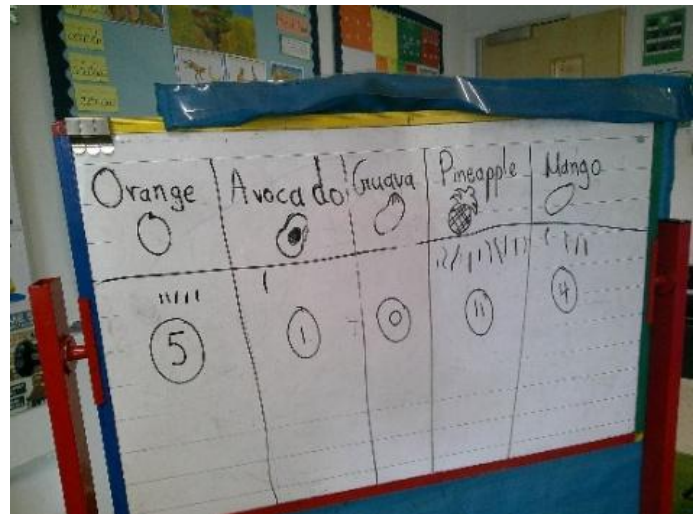
### Maths Week-Practical maths in Reception

One group met a couple of **Police Officers** – they were keen to hear about what we were doing and agreed to be in our group photo!

We enjoyed tasting all the different **fruits** too! What is your favourite fruit? We made a **chart** to **record how many** of us liked the different **fruits** we tried.

Why not try a different **fruit** this week. You may find a new favourite!

### Reception Team



## Year 2 News, Section 1

### Maths Week-Number Day in Year 2

On Friday, as part of **maths week**, St. Mary's celebrated '**Number Day**' and it was delightful to see Year 2 children embracing the day by wearing a collection of **numbers, symbols and calculations!**

Year 2 welcomed parents into our classrooms to participate in the **mathematics** magic.

A carousel of activities was arranged on tables with an array of resources to showcase **addition, subtraction, multiplication, division and money.**

Thank you to all the parents who joined us and happily delved into strategies and problem solving.

**Mrs Peterson** (Year 2 Lead and Y2 Peach Class teacher)



## Year 2 News, Section 2

### Maths Week-Number Day in Year 2

Thank you to all the parents who joined us and happily delved into strategies and problem solving.

**Mrs Peterson** (Year 2 Lead and Y2 Peach Class teacher)



## Year 2 News, Section 3

### Maths Week-Number Day in Year 2

Thank you to all the parents who joined us and happily delved into strategies and problem solving.

**Mrs Peterson** (Year 2 Lead and Y2 Peach Class teacher)



## Year 2 News, Section 4

### Maths Week-Number Day in Year 2

Thank you to all the parents who joined us and happily delved into strategies and problem solving.

**Mrs Peterson** (Year 2 Lead and Y2 Peach Class teacher)



## Year 2 News, Section 5

### Maths Week-Number Day in Year 2

Thank you to all the parents who joined us and happily delved into strategies and problem solving.

**Mrs Peterson** (Year 2 Lead and Y2 Peach Class teacher)



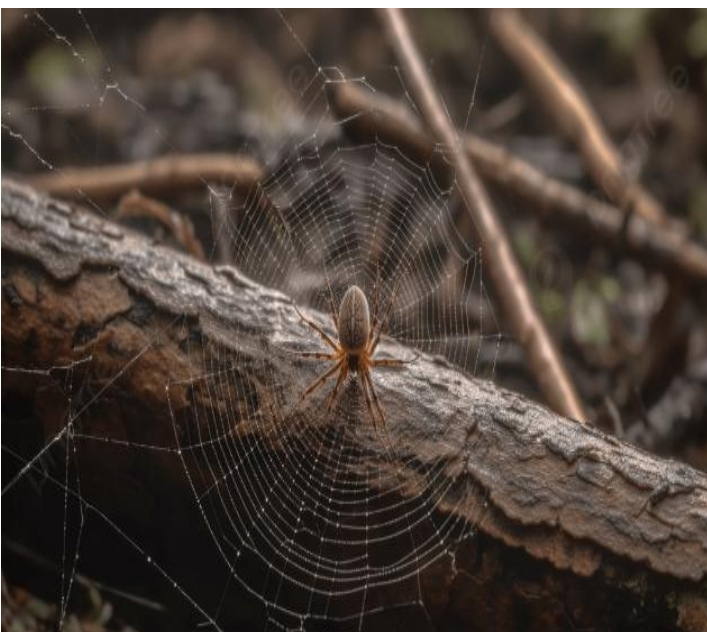
## Year 2 News, Section 6

### Science in Year 2

Also, this week, despite the relentless rain, we experienced some clear skies long enough to take our science lesson outside. This half term, Year 2 have been learning about '**Living Things and their Habitats**' and this week they immersed themselves into the topic by becoming **super scientist explorers!**

The children discovered **microhabitats** around the school field and uncovered many **minibeasts** living amongst them including a **worm** in the soil, a **spider** on a log and even a **caterpillar** on a leaf!

**Mrs Peterson** (Year 2 Lead and Y2 Peach Class teacher)



## Year 3 News, Section 1

### St Mary's Choir and Young Voices 2026

On Wednesday 4th February, a group of children from **Choir Club** took part in **Young Voices at Wembley Arena**. We sang 12 songs with a live band, and there were almost **5,000 children** in total singing! Our choir lead was **Miss Holder**. Accompanying the children was **Miss O'Brien**.

We travelled to Wembley Arena in the **St Mary's minibus** which was driven by **Mrs Grange**, our School Business Manager. The adults and children sang with enthusiasm and joy.

It was truly an incredible experience!

You can see more of our photos

here: <https://www.stmarys.slough.sch.uk/gallery/?pid=948&gcatid=2>

**Miss Holder** (Music Lead, Y3 Juniper Class teacher)



## Year 3 News, Section 2

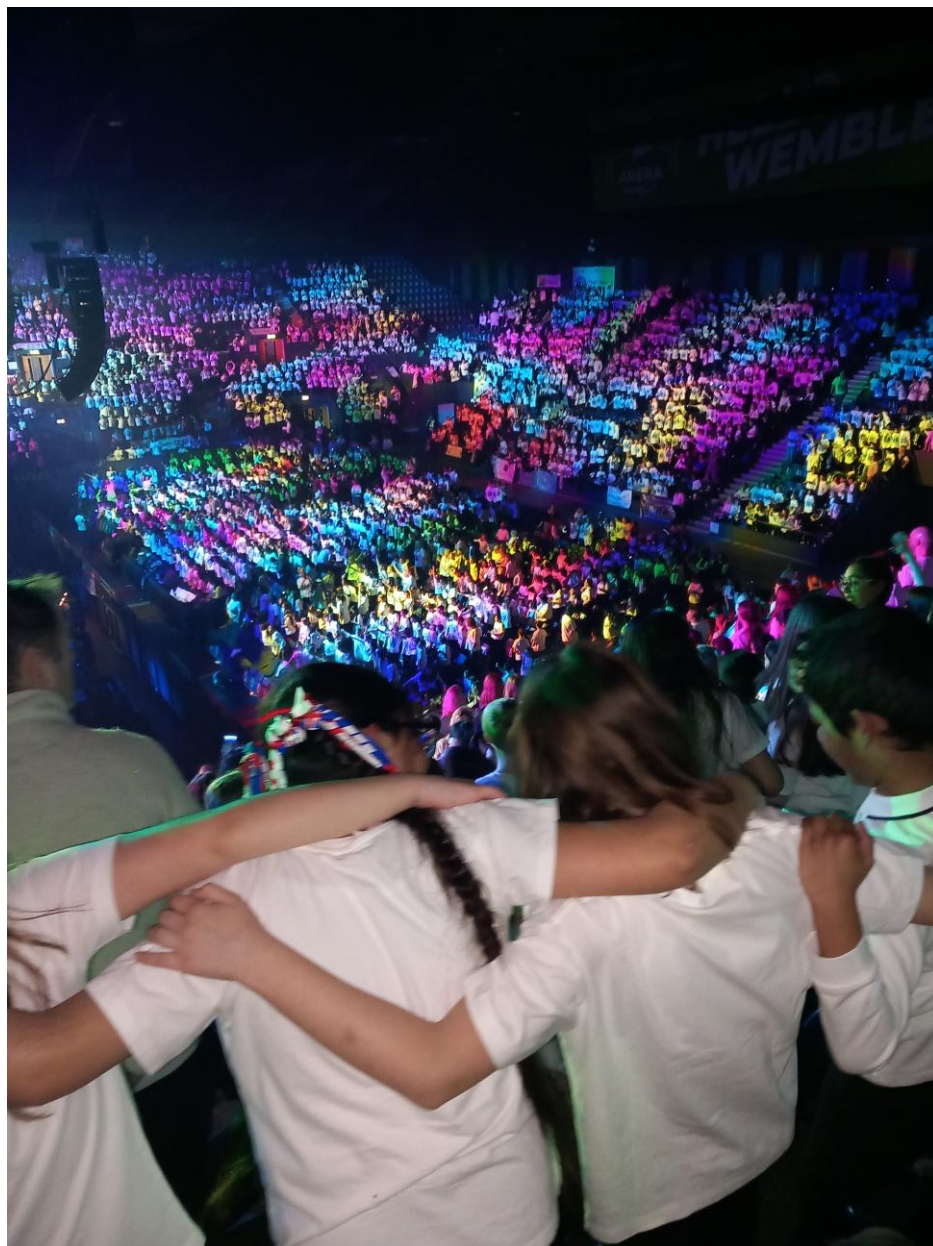
### St Mary's Choir and Young Voices 2026

It was truly an incredible experience!

You can see more of our photos

here: <https://www.stmarys.slough.sch.uk/gallery/?pid=948&gcatid=2>

**Miss Holder** (Music Lead, Y3 Juniper Class teacher)



## Year 3 News, Section 3

### St Mary's Choir and Young Voices 2026

It was truly an incredible experience!

You can see more of our photos

here: <https://www.stmarys.slough.sch.uk/gallery/?pid=948&gcatid=2>

**Miss Holder** (Music Lead, Y3 Juniper Class teacher)



## Year 3 News, Section 4

### St Mary's Choir and Young Voices 2026

It was truly an incredible experience!

You can see more of our photos

here: <https://www.stmarys.slough.sch.uk/gallery/?pid=948&gcatid=2>

**Miss Holder** (Music Lead, Y3 Juniper Class teacher)



## Year 3 News, Section 5

### Sycamore Class Assembly

The children in Sycamore performed a brilliant assembly all about how **volcanoes** erupt. Through confident acting and lively singing, the children brought **magma, pressure and eruptions** to life. The children also received personalised **certificates** to mark their **achievements** in Year 3 so far.

Well done for all your hard work Sycamore class!

**Miss Martins** (Reading for Pleasure Co- Lead, Y3 Sycamore Class teacher)



# Year 5 News, Section 1

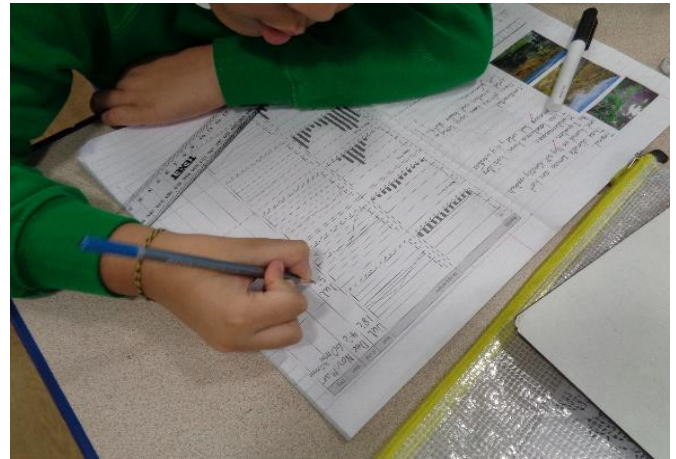
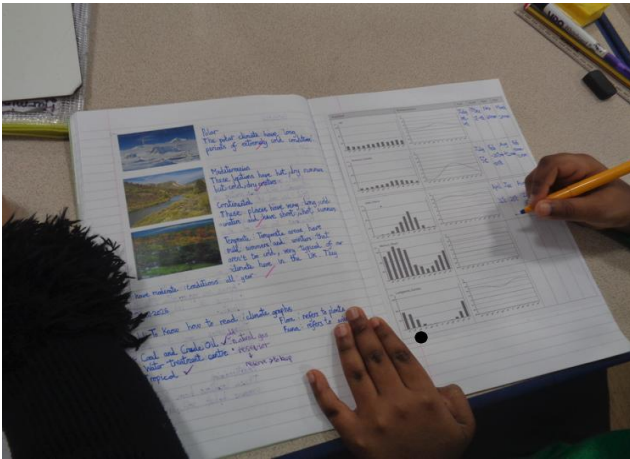
## Geography in Year 5

As part of our learning on biomes, children in year 5 have been interpreting climate graphs and using atlases/globes to help build their locational knowledge of different biomes around the world. In our English writing, children are researching biomes for comparison.

For more information on our geography unit, check out the link below:

<https://www.bbc.co.uk/bitesize/articles/zvsp92p#zmvsf82>

**Mr Ali** (Humanities Co Lead, Year 5 Lead and Y5 Hazel Class teacher)



## Year 5 News, Section 2

### Music in Year 5

Year 5 have been privileged to receive **specialist music lessons** delivered by a **local charity**.

**Mr Ali** (Humanities Co Lead, Year 5 Lead and Y5 Hazel Class teacher)



## Year 5 News, Section 3

### Music in Year 5

The children are receiving teaching on how to **play** different **instruments** as well as learning to play instruments as part of a wider group.

**Mr Ali** (Humanities Co Lead, Year 5 Lead and Y5 Hazel Class teacher)



## Year 5 News, Section 4

### Maths Week-Number Day in Year 5

For number day, Year 5 children have had a lot of **fun with problem solving** and **creating artwork** linked to maths. The children were amazed to learn how important maths is to our **every-day life**.

**Mr Ali** (Humanities Co Lead, Year 5 Lead and Y5 Hazel Class teacher)



## Year 5 News, Section 5

### Maths Week-Number Day in Year 5

For number day, Year 5 children have had a lot of **fun with problem solving** and **creating artwork** linked to maths. The children were amazed to learn how important maths is to our **every-day life**.

**Mr Ali** (Humanities Co Lead, Year 5 Lead and Y5 Hazel Class teacher)



## Year 5 News, Section 6

### Maths Week-Number Day in Year 5

The children also used their art and creative skills when thinking about their **Number Day outfits!**

**Mr Ali** (Humanities Co Lead, Year 5 Lead and Y5 Hazel Class teacher)



## Year 5 News, Section 7

### Maths Week-Number Day in Year 5

The children also used their art and creative skills when thinking about their **Number Day outfits!** It's been a busy week for Year 5!

**Mr Ali** (Humanities Co Lead, Year 5 Lead and Y5 Hazel Class teacher)



Half Term Fun at The Curve, Slough

Coming to Curve Venue, Slough

# Comedy Club 4 Kids



SUNJAI ARIF



BILAL ZAFAR

FAMILY AND FRIENDS OFFER  
(4 people)  
£40

Ages 6+ years and their grown ups!

'The perfect way to entertain the whole family'  
Three Weeks



Thursday 19 February at 2pm

£12 Standard | £10 Under 16s

**CURVE VENUE**  
The Curve, William Street,  
Slough, SL1 1XY

 [curvevenue.uk](http://curvevenue.uk)  
 01753 303 035

[www.slough.gov.uk](http://www.slough.gov.uk)  
**Slough**  
Borough Council  
 ARTS COUNCIL ENGLAND



# Half Term Fun at The Curve, Slough

CURVE VENUE PRESENTS

**£4**  
Per  
Session

or £12 for 4

# CURVE EXPLORERS

WEDNESDAY 18 FEBRUARY

From 9.15am  
to 4pm

**Ages  
5+  
years**

**Drumming**



**Singing**



**Arts and Crafts**



**Digital Animation**



**60 min  
Fun Filled  
Workshops**

**Try Something  
New!**

**CURVE VENUE**  
The Curve, William Street,  
Slough, SL1 1XY

 [curvevenue.uk](http://curvevenue.uk)  
 01753 303 035

[www.slough.gov.uk](http://www.slough.gov.uk)  
**Slough**  
Borough Council  
 ARTS COUNCIL  
ENGLAND



## Rocksteady Music at St Mary's C.E. Primary



Hi Parent or Guardian,

Do you want your child to experience the magic of playing music in their very own band? Rocksteady Music School is the leading provider of in-school rock and pop band lessons for primary age children – and we're delighted to let you know we're teaching in your child's school!

How does it work?

With Rocksteady, children learn to play an instrument through weekly band lessons. It's the perfect way to learn new musical skills, make friends and have fun – all at school! Rocksteady lessons are also shown to boost confidence, wellbeing social skills and even academic achievement.

Your child will learn to play songs instantly through listening and playing. There's no music theory involved and lessons are designed to be fun, inclusive and accessible. They will be making progress in every lesson and can also achieve an Ofqual-regulated Trinity Music qualification, without having to take a single exam!

Here's what else you need to know:

- Most lessons take place during the school day. There's no experience necessary and all instruments for lessons are provided.
- You can choose if they shine on vocals, keyboard, drums, guitar or bass.
- Proudly watch as your child performs in their end of term concerts, showing just how far they have come!
- Rocksteady band leaders are professional musicians who inspire a passion for music and support your child every step of the way.

Places are offered on a first come, first served basis. There's a money-back guarantee for the first month and you can cancel at any time.

For more details on availability and cost, visit [rocksteadymusicschool.com](https://rocksteadymusicschool.com) and find your school on the sign up page or call 0330 113 0330.

Best wishes,

Rachel Hawker | Director of Education



0330 113 0330  
(Mon-Thurs 8am-8pm, Fri 8am-6pm, local rate)  
[rocksteadymusicschool.com](https://rocksteadymusicschool.com)

Find out what parents say about Rocksteady →

## Music at Slough Borough Council



# Slough Youth Orchestra



Film music, Theatre, Classical, Pop, and more -  
The World of Orchestra is limitless, and continually developing!

Required Grade 2+ standard on your instrument.

Meet like-minded musicians from schools in the community.  
Perform in exceptional concert venues.  
Develop your string, brass, wind, or percussion playing.

For more information, contact us: [music.service@slough.gov.uk](mailto:music.service@slough.gov.uk)



## Diary Dates

Please check 'diary dates' weekly. As new school events are confirmed, the 'diary dates' section of the newsletter is updated. Each week's new confirmed dates are shown in [blue](#).

### Spring Term

11.02.2026	Parent Information Meeting- Y1: Phonics Screening Check 8.30am
12.02.2026	Parent Information Meeting- Y4: Multiplication Test at 8.30am
12.02.2026	Assembly: Y3 Ash Class at 3pm
12.02.2026	Trip: Y1 to Windsor Castle
13.02.2026	Lunar New Year Celebration for Nursery, Reception, Y3 and Y4
<b>13.02.2026</b>	<b>Last day of Spring Term 1</b>

### Half Term Holiday

<b>23.02.2026</b>	<b>First Day of Spring Term 2</b>
24.02.2026	Trip: Y2 Eton College
24.02.2026	Workshop: Y6 History 'World War 2' experience at St Mary's school
02.03.2026	Reading Week
05.03.2026	World Book Day
05.03.2026	Assembly: Y5 Elm Class at 3pm
06.03.2026	Assembly: Y3 Juniper Class at 8.50am
09.03.2026	Parent Information Meeting- Y1: Phonics at 8.30am and 2.45pm
<a href="#">11.03.2026</a>	<a href="#">Rocksteady Crew Performance for Parents at 2pm</a>
12.03.2026	Assembly: Y2 Peach Class at 3pm
13.03.2025	Assembly: Y4 Oak Class at 8.50am
16.03.2026	EYFS Natural World 'Living Eggs' experience at St Mary's school
17.03.2026	Workshop: Y3 History 'Stone Age' experience at St Mary's school
18.03.2026	Trip: Y2 to Whipsnade Zoo
23.03.2026	Easter Performance at St Laurence's Church for morning Nursery Parents at 9.30am
23.03.2026	Parent Consultation Day 1 for Nursery, Reception, Y1, Y2 and Y6
24.03.2026	Easter Performance at St Laurence's Church for afternoon Nursery Parents at 2.00pm
24.03.2026	Trip: Y6 to Imperial War Museum
24.03.2026	Parent Consultation Day 1 for Y3, Y4 and Y5
25.03.2026	Parent Consultation Day 2 for Nursery, Reception, Y1, Y2 and Y6
26.03.2026	Easter Performance at St Mary's Church for Y3 and Y4 Parents at 9.30am
26.03.2026	Parent Consultation Day 2 for Y3, Y4 and Y5
27.03.2026	Nursery and Reception Easter Egg Hunt
27.03.2026	Reception, Y1 and Y1 Easter Bonnet Parade
<b>27.03.2026</b>	<b>Last Day of Spring Term 2</b>

### Easter Holiday

<b>13.04.2026</b>	<b>First Day of Summer Term 1 for Children</b>
-------------------	--