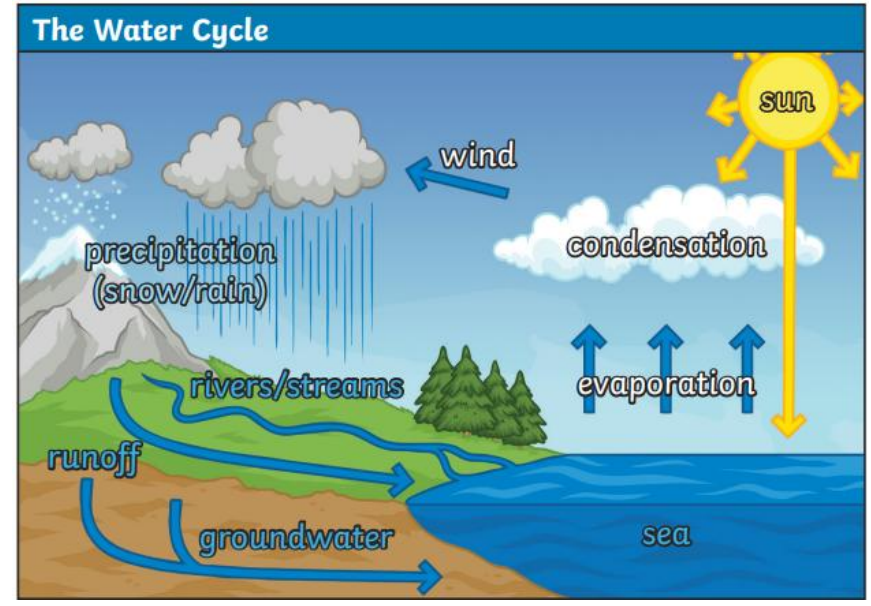


Knowledge Organiser Year 5 Geography: Is water distributed fairly across the world?

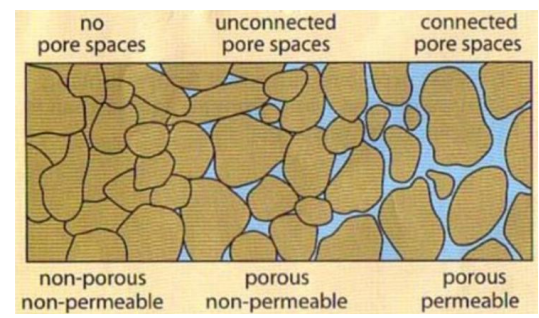
Key Vocabulary	
Water cycle	The water cycle (also known as the hydrologic cycle) is the continual circulation of water in the Earth's atmosphere.
Precipitation	Rain/hail/snow fall
Evaporation	When a liquid (like water) turns into gas .
Condensation	When a gas (like water vapour) turns into a liquid.
Permeable	A surface which allows water to flow through it (e.g loose soil)
Sewage	Waste water from the toilet after it has been used. This is drained away after flushing through sewage pipes.
Run off	Water which does not absorb into the ground. It 'runs off' the surface to form streams, rivers etc)
Distribution	How something is shared.
Reservoir	A collection of water.

Drought	When there is less than expected rainfall leading to a water shortage.
Drainage	The system in which water flows away from where into the ground.

Evaporation	Condensation
Evaporation occurs when a liquid changes into a gas or water vapour .	Condensation is when a gas cools and changes to a liquid.



Permeability
 – The ability of water to flow through a soil.



What systems does St Mary's have to distribute and drain away water?

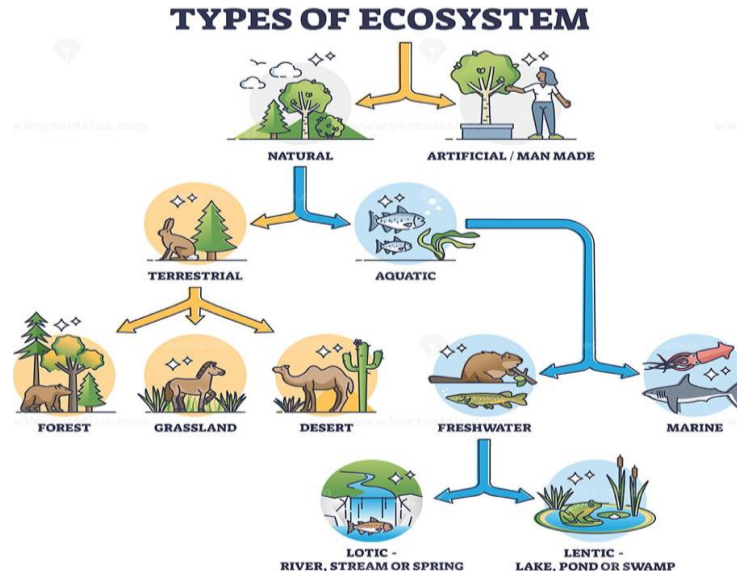
Water distribution	Water drainage
Water is transported through pipes to distribution points like the school canteen, toilets and classrooms.	Rain and wastewater is collected through run off into pipes (both in the ground and from roof)

Collins Junior Atlas

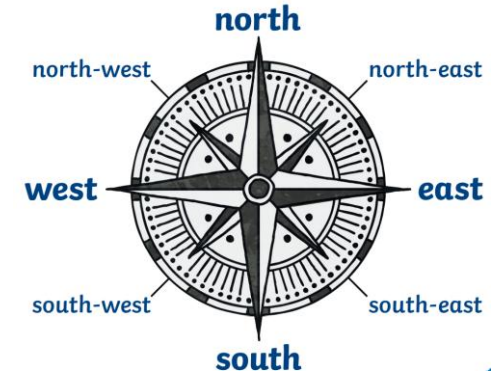
- 24-25
- 22-23
- 68-69
- 62-63

Knowledge Organiser Year 5 Geography: How are animals and plants interdependent in biomes?

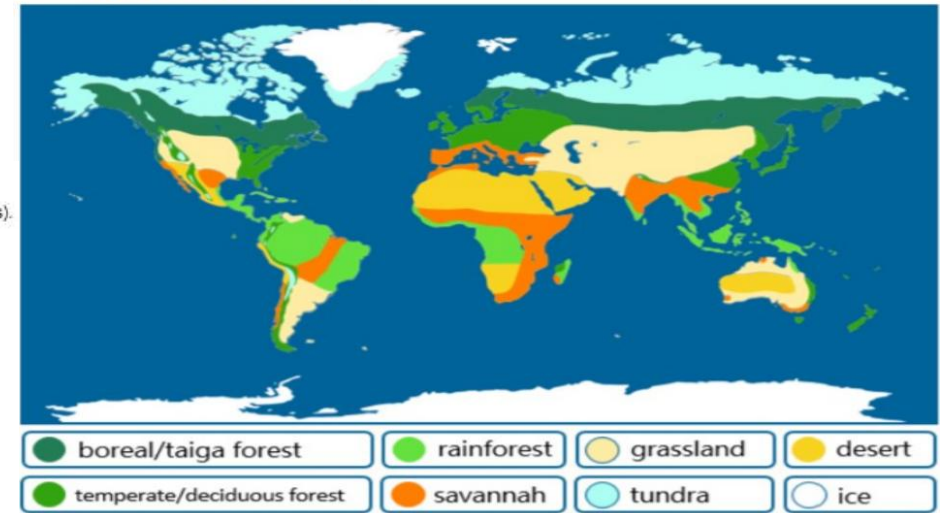
Key vocabulary	
Biome	A large ecosystem that relies on climate .
Climate	Average weather conditions over a period.
Ecosystem	Group of living organisms (plants, animals, insects etc) interacting with each other in their environment.
Flora	Another word to refer to plants.
Fauna	Another word to refer to animals.
Dependent	Relying on something.
Interdependent	Relying on each other equally.
Equator	Imaginary line halfway around the earth.
Latitude	Imaginary lines that go around the earth east to west.
Longitude	Imaginary lines that go around the earth from north to south.
Biodiversity	variety of living things living in a particular biome/habitat or interacting with each other in an ecosystem.
Habitat	A place where animals/plants live.



Compass directions

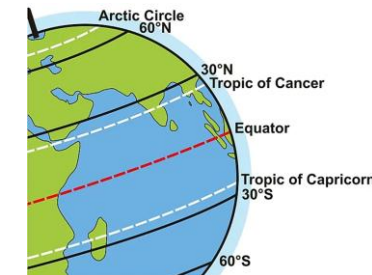
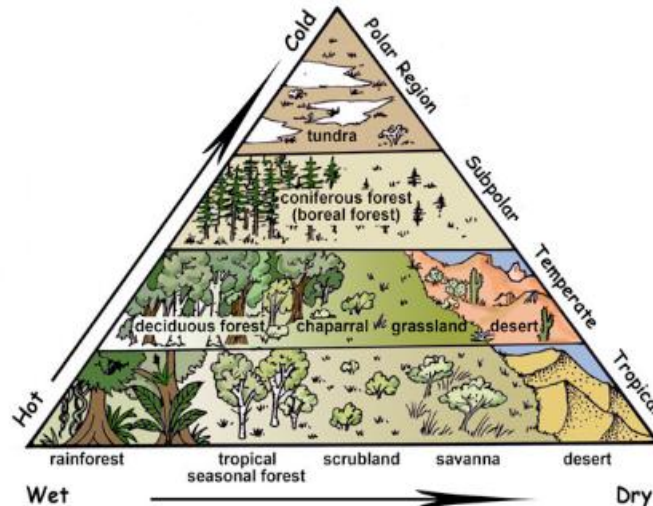


World Biomes Map



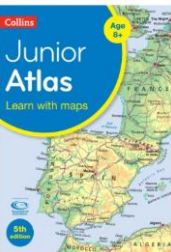
Biomes on Earth

Biomes were formed by climate (rain and temperature) and location on Earth (tropics to polar regions). Can you see the pattern below?



Collins Junior Atlas

- 60-61
- 62-63
- 64-65



Knowledge Organiser Year 5 Geography: What is the route from Eton Playing Fields to Yew Tree Road?



Key vocabulary	
Route	a particular way of getting from one place to another
Motorway	a wide road for fast-moving traffic
Traffic/congestion	All vehicles that are moving along the roads in a particular area
Recreation	An activity that is relaxing and fun
Green Belt Land	an area of land with fields or parks around a town or city, where people are not allowed to build houses or factories by law.
Jubilee River	The Jubilee River is a flood relief channel on the River Thames. It was constructed to reduce the risk of flooding in Windsor and Eton
Pedestrian crossing	A safe place for people to cross a road.
Dual carriage way	has four lanes (2 lanes each side), and is always separated by a man-made barrier or strip of land
Allotment	a place where you can grow fruit, vegetables and flowers.
Risk assessment	A plan to stay safe during the fieldwork
Borough	An area that is locally governed.



Landmarks/areas of interest:

- Yew Tree Road crossing points
- Lascelles Park
- Upton Park
- Eton College Playing Fields
- Thames Valley Athletic Centre
- Windsor Castle (viewed from Upton Park)

Map key

a) St Mary's Church of England Primary School.
b) Thames Valley Athletics Centre.

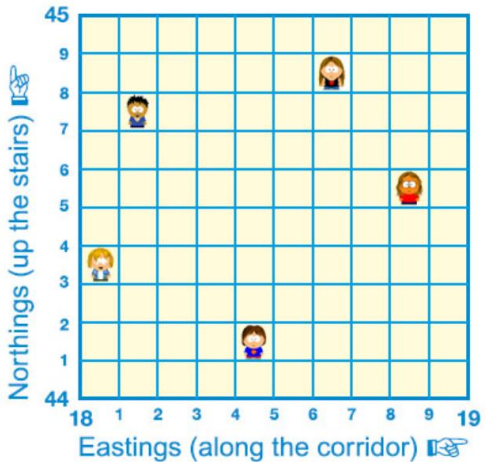
To help us easily find specific locations on a map, grid squares are numbered.

Grid squares are made up of 2 numbers:
EASTINGS (along numbers)
NORTHINGS (up numbers)

To find the location of the red dot, we need a **FOUR FIGURE GRID REFERENCE**:

First find the **EASTING** (along number) = **03**
 Next find the **NORTHING** (up number) = **02**

Combine these numbers to create a **FOUR FIGURE GRID REFERENCE**.
THE RED DOT IS AT GRID REFERENCE 03 02



Compass directions

