

Welcome to St Mary's Church of England Primary School

**Nursery Welcome Morning
Monday day 9th June 2025**



Welcome to St Mary's School

[ABOUT US](#) [SCHOOL INFORMATION](#) [NEWS AND EVENTS](#) [PARENTS](#) [CHILDREN](#) [COVID-19](#) [NURSERY](#)



- [Contact us](#) >
- [Find us](#) >
- [Noticeboard](#) >
- [Calendar](#) >
- [Awards](#) >
- [Twitter](#) >
- [Translate](#) >
- [Attendance](#) >



Welcome to
St Mary's Church of England Primary School
Learn. Grow. Achieve. Flourish.



WELCOME BACK EVERYONE



Our School Mission Statement:

To provide a **safe, supportive and happy learning environment** where all children can **learn, grow, achieve and flourish.**





Learn Grow Achieve Flourish



Nursery times

Two sessions am OR pm

Morning session - 08.30-11.30

Afternoon session - 12.20-3.20

**If you are late you will need to drop child to the
main school office.**



Attendance

Email office: officestaff@stmarys.slough.sch.uk

Mrs F. Idrees

Office Manager

Admissions

Attendance & family liaison lead

1 The Law

Whilst the legal requirements for attendance do not apply to children under 5, regular routines for young children support the settling-in process and enhance their sense of security. They can also foster good habits for children's later life. Even if a child only has a part time place regular attendance is still important.

7 What to do if you are worried

Working together will get the best results for your child. Everyone wants them to reach their full potential. Talk to the class teacher/key worker if you are worried. Ask for advice, remember they have experience. Don't compare your child to how other children are doing. Everyone is on their own journey. Ask to make an appointment with someone else in school such as the SENDCO, family liaison officer or Early Year lead if you are still worried.
Discuss your worries with the school at the earliest opportunity - they want to help.

6 Learning and development

Often underachievement can be linked back to poor attendance in Reception and Nursery. Never underestimate how much they are learning. A huge amount of key reading, writing and maths skills are covered. Any gaps in attendance means they have missed new phonics sound, which makes reading hard later. Regular attendance also boosts your child's self esteem as they can see themselves making progress and succeeding.
Every week lost = 30 hours of learning

2 Why it matters

All parents want the best for their children. Your child will only get one chance at school and EYFS is such a critical part of their learning journey. Research shows that children with poor attendance are at a disadvantage later in life. They often:

- Find it harder to make and maintain friendships
- Are less likely to gain good qualifications
- Earn lower wages
- Have a higher chance of being unemployed
- Have low self-esteem

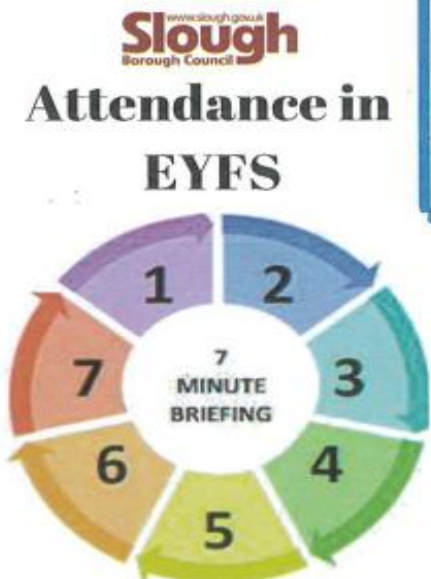
Every School Day Matters

3 Getting it right from the start

Poor attendance and punctuality, even at the earliest age, can affect achievement in later life. Children learn and develop more from birth to 5 years old than at any other time. Missing days in Early Years leads gaps in learning later. Understanding that going to school is what we do will help make life easier in the future and also ensure your child accesses all the learning available to them.

4 Secure Relationships

Young children find it easier to build and maintain a range of relationships when they regularly attend nursery/school. For some families, particularly at times of stress, the child's regular attendance at school/nursery allows parents to get other things done and helps them enjoy spending time with the child when he or she is at home.



Information for Parents

5 Good Habits

Establishing good habits from the start helps children to settle more quickly into new settings and routines. Children who attend every planned session develop a feel for the rhythm of the week and gain a sense of security from some regular elements.
Tips: Have a regular bed time; prepare for the morning by packing a bag the night before and setting out clothes; talk together about the fun things they will do at school.

Attendance

All pupils between 5 and 16 must attend school for the duration of the year, and absences must be avoided wherever possible.

Authorised

- Parent contacts school and shares reason for absence.
Specifies illness e.g., chicken pox – *not sick*
Inform the office via email or phone call

Unauthorised

- Are any absence **not agreed** by your child's school.
- If your child has an unauthorised absences in an academic year, **you may be liable for a penalty notice.**

Safeguarding **Password**

End of day collection:

We take safeguarding seriously. Children must be brought to school and collected by a parent. **If someone other than yourself is picking up your child, please inform the school office as soon as you can. The office will provide a password which the collecting adult must share with the class teacher on collection of your child.** For safety reasons, children will not be handed over to anyone without prior permission.



Medicines

Records are kept each time an inhaler is used. The reliever inhalers of children are kept in their individual classroom in a designated medical green backpack. All inhalers must be labelled with the child's name by the parent.

- **Medicine procedures**
- **Injuries procedure**

Miss J. McMahon

Communication and Welfare

Officer



medicaltracker

Safeguarding

We have a duty to keep your child safe by:

- Providing a **safe environment** in which children can learn.
- Identify children who are **vulnerable and may be or are at risk**.
- **Raise concerns about a child's welfare** using the appropriate reporting procedures, both at school and Local Authority level.

MEET OUR SAFEGUARDING TEAM



 Mrs. P. O'Brien Co-Headteacher	 Mrs. M. Whatley Designated Safeguarding Lead	 Mrs. S. Khan Co-Headteacher
 Mrs. G. Wood Deputy Designated Safeguarding Lead	 Miss. K. Welsh Safeguarding Governor	 Mr. M. Ali Deputy Designated Safeguarding Lead

Are you concerned about a pupil?

Visitors – Please ask a member of staff to direct you to a member of our safeguarding team.

Staff – Log your concerns on CPOMS.

YOU MUST SHARE YOUR CONCERNS IMMEDIATELY

[home](#) > [Parents](#) > [St Marys CE Primary School \(Slough\)](#)

St Marys CE Primary School (Slough)



St Marys CE Primary School (Slough)

Yew Tree Road
Slough
Berkshire
SL1 2AR

[Welcome >](#)
[School Uniform Policy >](#)
[FREE Delivery on orders over £60 >](#)



Check out our **NEW** clearance page [here](#) for plain adult & children's clothing for under £5

Current products for St Marys CE Primary School (Slough)



Sweatshirt

prices from £9.80



Nursery Sweatshirt

prices from £9.80



Polo Shirt

prices from £8.45

Uniform

Nursery Sweatshirt



Product Details

Soft and durable, hard-wearing and colorfast this sweatshirt will last wash after wash.

- 45% Acrylic/ 30% Cotton/ 15% Polyester / 10% Mix

Logo Details

Nursery Logo Left Breast

Colours

Emerald

Purchase

Colour: ▼

Size: ▼

£9.40



INFORMATION

To receive your order before the start of term please order by 31st July.

We do everything we can to send out all items as soon as possible but a high volume of orders or unforeseen circumstances may occasionally lead to delays.

If you have any queries, please do not hesitate to call or email us. We are happy to help!

T: 01923 255525 | **E:** parentcustomerservices@mapac.net

Uniform Information

Home >> Parents >> Uniform Information

PE will start after October HALF TERM

Wear PE kit to school



Velcro Plimsolls



PE Kit – Indoors

- Black T Shirt with logo
- Black Plain shorts or black leggings
- Black Plimsolls for the hall
- **NO tights for indoor PE**
- **No jewellery**

PE Kit – Outdoor

- Black tracksuit (no logos/football etc.)
- Trainers

This is not school uniform

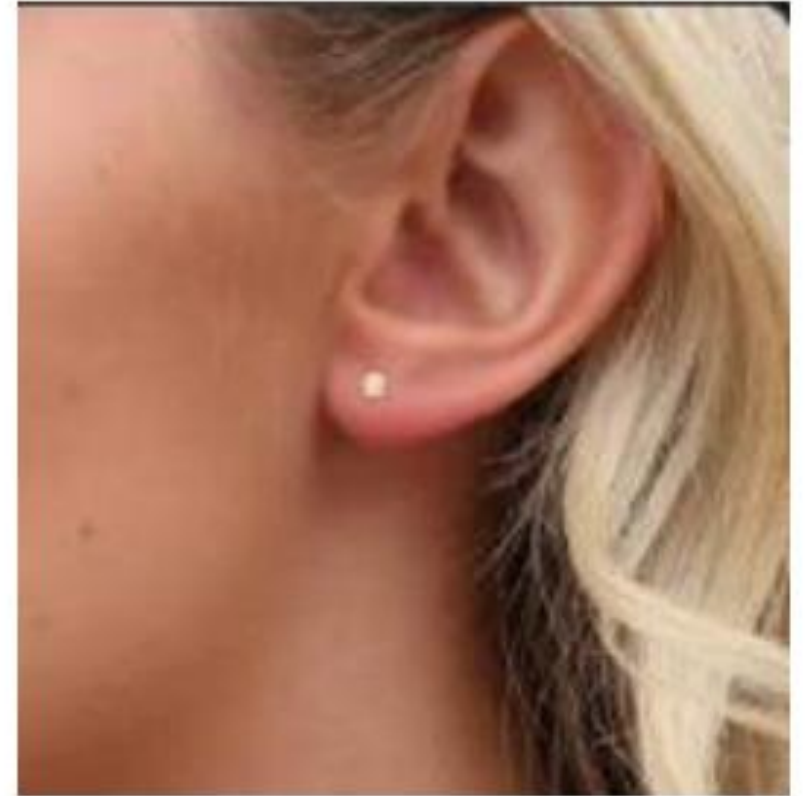


Health and Safety

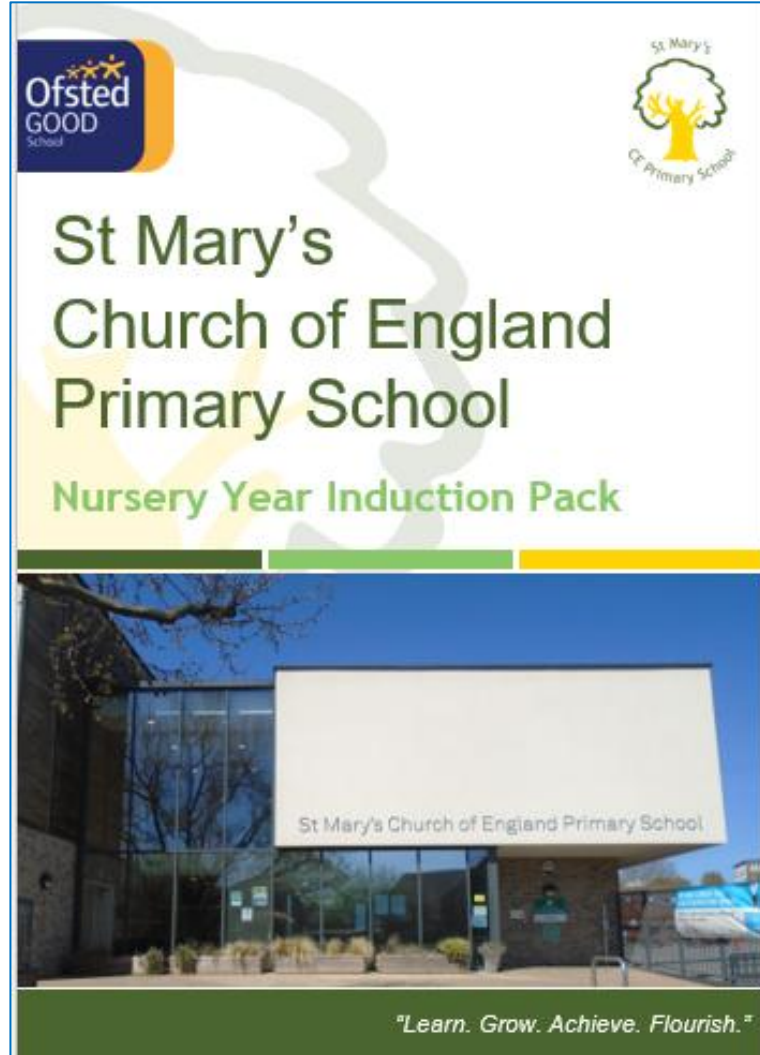


Jewellery

Only small stud earrings are allowed



Welcome Pack



This Welcome Booklet has been specially created for you.

Please read this booklet together with your child and discuss the information together.

What can I expect?

- ▶ **Safe, secure & happy environment**
- ▶ **Good communication**
- ▶ **Support**
- ▶ **Care**
- ▶ **Home School links**
- ▶ **Stay and play sessions**
- ▶ **Monthly Newsletter**



Communication:

- ▶ Weekly Newsletter from Head Teacher
- ▶ Nursery Section on the school website
- ▶ Nursery newsletter every month



A typical day in Nursery

- ▶ Arrival
- ▶ Carpet time – registration
- ▶ Singing and rhyme time
- ▶ Morning activities
- ▶ Free flow play inside and out
- ▶ Snack time
- ▶ Story time
- ▶ Home



How and what do we learn in the EYFS?

- ▶ Through play-based activities, child initiated, and adult led
- ▶ Inside and **outdoor learning**
- ▶ Routines and school readiness
- ▶ Forest school
- ▶ Developing early literacy and maths skills
- ▶ Phonics
- ▶ Social skills
- ▶ Learning about the world around them
- ▶ Values

Seven Areas of Learning

Prime areas

Communication and Language

- Listening, Attention and Understanding
- Speaking



Personal, Social and Emotional Development

- Managing Self
- Self-Regulation
- Building relationships



Physical Development

- Gross Motor Skills
- Fine Motor Skills



Specific Areas

Literacy

- Comprehension
- Word Reading (Phonics)
- Writing

Expressive Arts and Design

- Creating with Materials
- Being imaginative and expressive



Mathematics

- Number
- Numerical patterns

Understanding the World

- Past and Present
- People, Culture and Communities
- The Natural World

What is expected from me?

**Commitment to
nursery**

**Support
children's
learning and
development**

**Attend parent
meetings**

**Attend stay
and play
sessions**

**Work in
partnership
with the team**



Tapestry

- An online learning journal
- App and browser version
- We can use it to record children's learning
- We will post pictures of your child with feedback about how they are learning
- [Sign Tapestry form](#)



Early Years Pupil Premium Form

- EYPP is funding to improve education outcomes for disadvantaged pupils in schools in England.
- **EYPP is not a personal budget for individual pupils.**
- We use our EYPP to support children in all aspects of their education.
- Please complete the form / online form

Phonics

- Teach letter sound **NOT** name
- Read, Write, Inc. scheme

www.youtube.com › watch

Parent video: [How to say the sounds - YouTube](#)



Parent video: How to say the **sounds** ... 85K views 1 year ago ... DAILY PHONICS PRACTICE **Read Write Inc Phonics Set 2** The Shed School

YouTube · Ruth Miskin Training · 20 Jan 2020

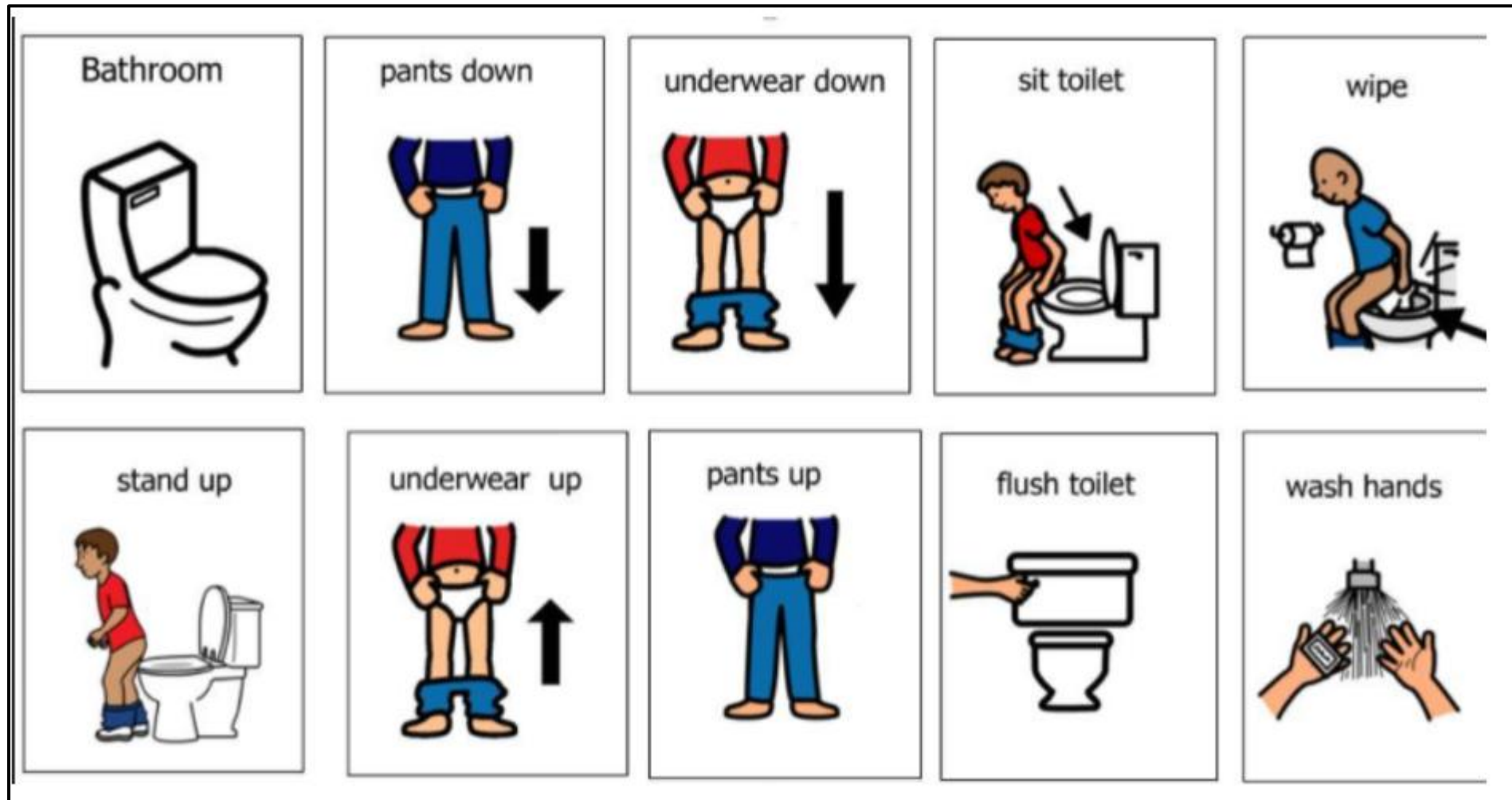
<https://www.youtube.com/watch?v=TkXcabDUg7Q>

Read Write Inc. Phonics Desktop Speed Sounds Chart

Speed Sounds Set 1

m m	a a	s s	d d	t t
i i	n n	p p	g g	o o
c c	k k	u u	b b	f f
e e	l l	h h	sh sh	r r
j j	v v	y y	w w	th th
z z	ch ch	qu qu	x x	ng nk

Fully toilet trained



Health and Safety

According to Highway Code Rule 243, you must not park near or drop off at the school entrance.



Please do not
drop off in
front of our
car park
gates



Starting School: Key dates

- Stay and Play sessions
- Visit nursery with your child
- Sign up for a session today





**Thank you for coming
and we look forward to
meeting your child for
the play and stay
sessions.**