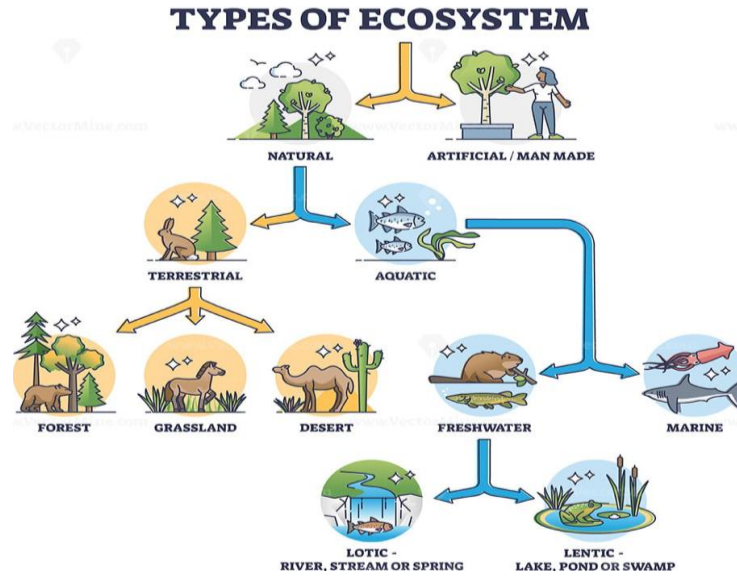
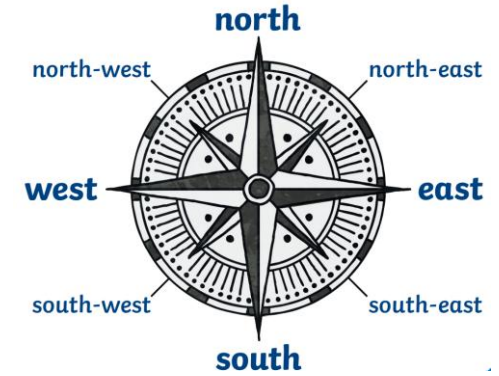


Knowledge Organiser Year 5 Geography: How are animals and plants interdependent in biomes?

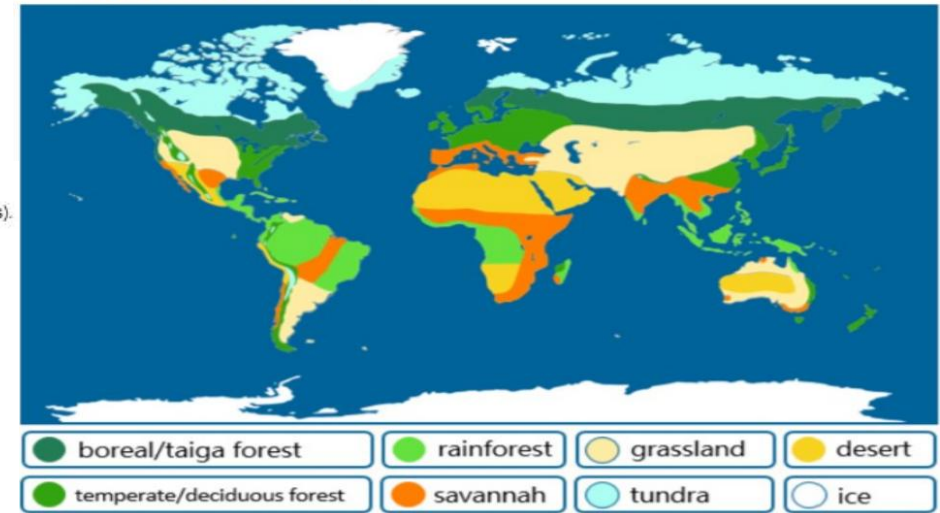
Key vocabulary	
Biome	A large ecosystem that relies on climate .
Climate	Average weather conditions over a period.
Ecosystem	Group of living organisms (plants, animals, insects etc) interacting with each other in their environment.
Flora	Another word to refer to plants.
Fauna	Another word to refer to animals.
Dependent	Relying on something.
Interdependent	Relying on each other equally.
Equator	Imaginary line halfway around the earth.
Latitude	Imaginary lines that go around the earth east to west.
Longitude	Imaginary lines that go around the earth from north to south.
Biodiversity	variety of living things living in a particular biome/habitat or interacting with each other in an ecosystem.
Habitat	A place where animals/plants live.



Compass directions

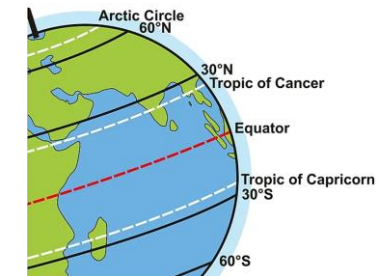
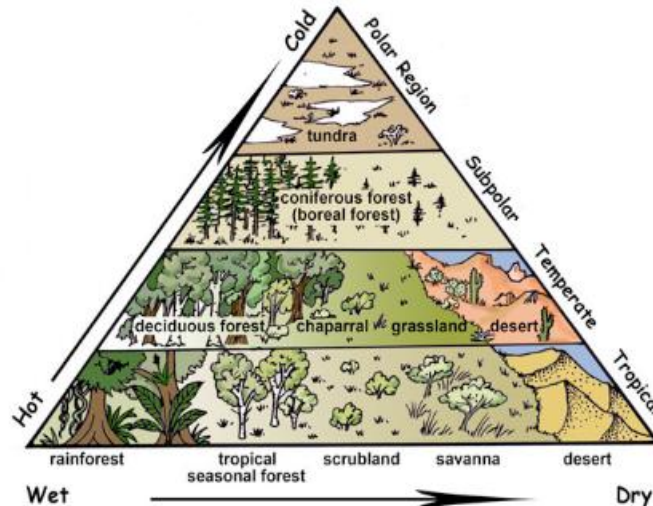


World Biomes Map



Biomes on Earth

Biomes were formed by climate (rain and temperature) and location on Earth (tropics to polar regions). Can you see the pattern below?



Collins Junior Atlas

(page numbers)