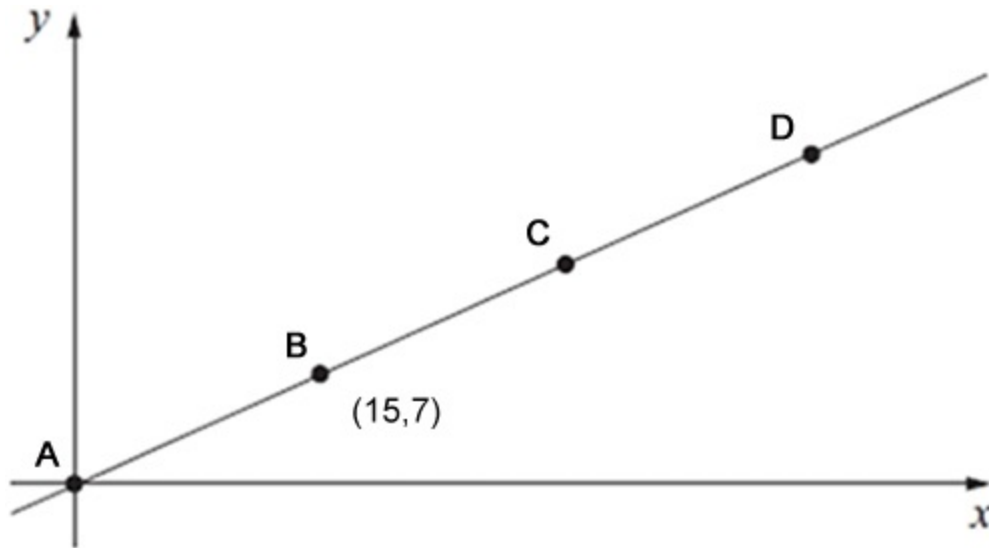


1. Here is a line on coordinate axes.



Points **A**, **B**, **C** and **D** are equally spaced.

The coordinates of **B** are (15,7).

What are the coordinates of **D**?

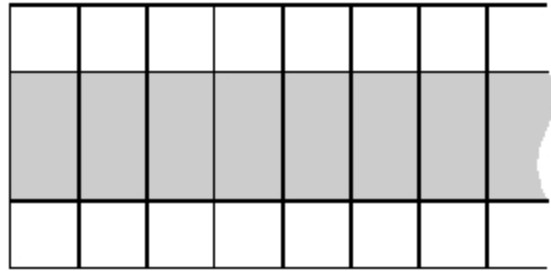
D =

1 mark

2. Track

Kerry makes a pattern from grey tiles and white tiles.

You cannot see all of the pattern but it continues in the same way.



(a) Kerry uses **30 grey** tiles.

How many white tiles does she use?

white tiles

1 mark

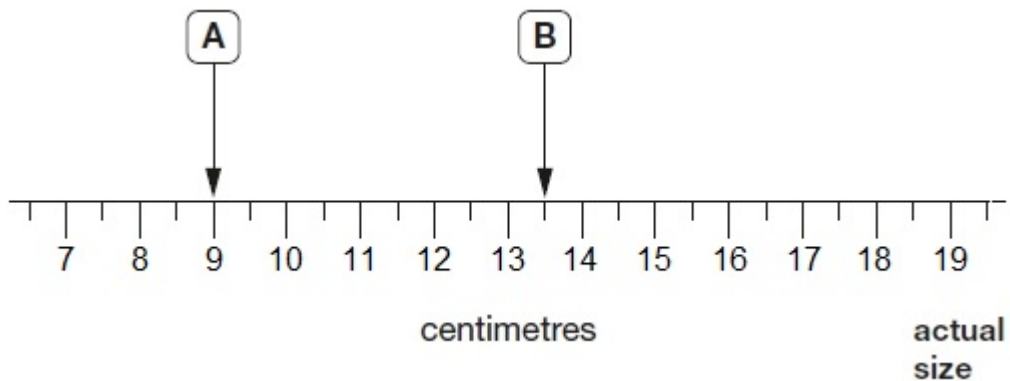
(b) Tim makes a pattern like Kerry's but he uses **64 white** tiles.

How many grey tiles does Tim use?

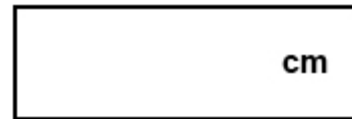
grey tiles

1 mark

3. Here is part of a centimetre scale, with two points marked.



(a) What is the distance between point **A** and **B**?



cm

1 mark

(b) Point **C** is **twice as far** from point A as it is from point B.

On the scale above, mark one place where point C could be.

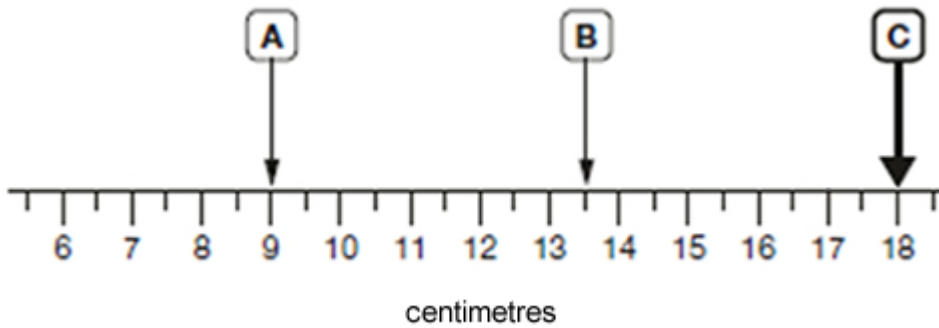
1 mark

Mark schemes

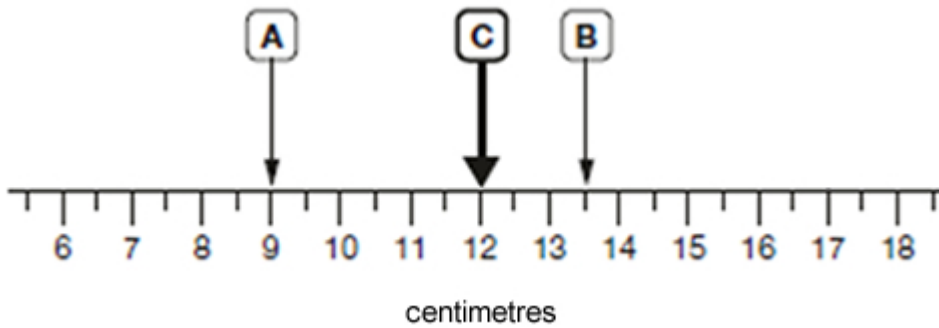
- 1.** (45, 21)
Accept unambiguous answers written on the diagram. [1]

- 2.** (a) 60 1
(b) 32 1

- 3.** (a) $4\frac{1}{2}$ OR 4.5 1
(b) A point marked on the line at either 18 cm OR 12 cm, ie [2]



OR



The mark need not touch the line provided the intention is clear.

The marked point need not be labelled.

U1

[2]