



Learn. Grow. Achieve. Flourish.

'I instruct you in the way of wisdom and lead you along straight paths.' Proverbs 4:11

# St Mary's Church of England Primary School

## **Reception Welcome Induction Meeting**



Learn. Grow. Achieve. Flourish.

'I instruct you in the way of wisdom and lead you along straight paths.' Proverbs 4:11

# Learn





Learn. Grow. Achieve. Flourish.

'I instruct you in the way of wisdom and lead you along straight paths.' Proverbs 4:11

# Grow





Learn. Grow. Achieve. Flourish.

'I instruct you in the way of wisdom and lead you along straight paths.' Proverbs 4:11

# Achieve





Learn. Grow. Achieve. Flourish.

'I instruct you in the way of wisdom and lead you along straight paths.' Proverbs 4:11

# Flourish



# Seven Areas of Learning

## Prime Areas

### Communication and Language

- Listening, Attention and Understanding
- Speaking



### Personal, Social and Emotional Development

- Managing Self
- Self-Regulation
- Building relationships



### Physical Development

- Gross Motor Skills
- Fine Motor Skills



# Specific Areas

## Literacy

- Comprehension
- Word Reading (Phonics)
- Writing



## Mathematics

- Number
- Numerical patterns

## Expressive Arts and Design

- Creating with Materials
- Being imaginative and expressive



## Understanding the World

- Past and Present
- People, Culture and Communities
- The Natural World

# How and what do we learn in Reception?

## Direct Teaching

- Phonics
- Handwriting
- Maths
- Book Talk
- NELI
- Colourful Semantics

## Continuous Provision

- During CP time , children are given opportunities to apply and consolidate their knowledge independently. It helps them develop problem solving and decision-making skills.

# Reception classes

- ▶ 3 form entry
- ▶ Reception – Year 6 (4-11)
- ▶ Separate Reception Gates
- ▶ 668 on roll
- ▶ 30 children in each class
- ▶ 90 children in each year group

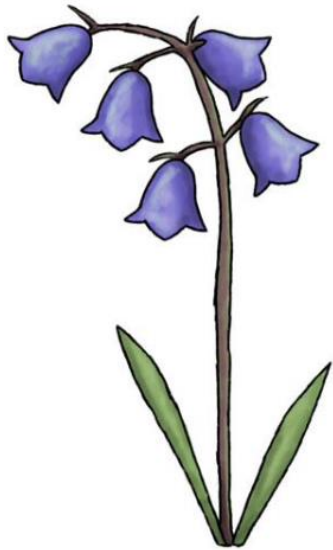


# Our Christian Values



<b>Term</b>	<b>Value</b>
<b>Autumn</b>	<b>Love</b> <b>Respect</b> <b>Peace</b>
<b>Spring</b>	<b>Wisdom</b> <b>Honesty</b> <b>Responsibility</b>
<b>Summer</b>	<b>Forgiveness</b> <b>Resilience</b> <b>Perseverance</b>

**Bluebell**



**Daffodil**



**Poppy**



# What can I expect?

- Safe, secure & happy learning environment
- Good communication
- Support
- Care
- Home School links
- Parental workshops
- Weekly Newsletter





Learn. Grow. Achieve. Flourish.

'I instruct you in the way of wisdom and lead you along straight paths.' Proverbs 4:11

## Safeguarding

- DSL: Ms Whatley
- DDSL: Mrs S. Khan
- DDSL: Ms Robinson
- DDSL: Miss Wood
- DDSL (Prevent): Mr Ali
- DDSL (Online Safety): Mr Plumley
- Link Governor: Ms Welsh





Learn. Grow. Achieve. Flourish.

'I instruct you in the way of wisdom and lead you along straight paths.' Proverbs 4:11

## Safeguarding

We have a duty to keep your child safe by:

- Providing a **safe environment** in which children can learn.
- Identify children who are **vulnerable** and may be or are **at risk**.
- **Raise concerns** about a child's **welfare** using the appropriate reporting procedures, both at school and Local Authority level.



Learn. Grow. Achieve. Flourish.

'I instruct you in the way of wisdom and lead you along straight paths.' Proverbs 4:11

# Safeguarding





Learn. Grow. Achieve. Flourish.

'I instruct you in the way of wisdom and lead you along straight paths.' Proverbs 4:11

## Safeguarding

- End of day collection





Learn. Grow. Achieve. Flourish.

'I instruct you in the way of wisdom and lead you along straight paths.' Proverbs 4:11

# Attendance

Email office: [officestaff@stmarys.slough.sch.uk](mailto:officestaff@stmarys.slough.sch.uk)

- **Mrs F. Idrees**
- Office Manager
- General Admissions
- Attendance Lead



## 1 The Law

Whilst the legal requirements for attendance do not apply to children under 5, regular routines for young children support the settling-in process and enhance their sense of security. They can also foster good habits for children's later life. Even if a child only has a part time place regular attendance is still important.

## 2 Why it matters

All parents want the best for their children. Your child will only get one chance at school and EYFS is such a critical part of their learning journey. Research shows that children with poor attendance are at a disadvantage later in life. They often:

- Find it harder to make and maintain friendships
- Are less likely to gain good qualifications
- Earn lower wages
- Have a higher chance of being unemployed
- Have low self-esteem

**Every School Day Matters**

## 7 What to do if you are worried

Working together will get the best results for your child. Everyone wants them to reach their full potential. Talk to the class teacher/key worker if you are worried. Ask for advice, remember they have experience. Don't compare your child to how other children are doing. Everyone is on their own journey.

Ask to make an appointment with someone else in school such as the SENDCO, family liaison officer or Early Year lead if you are still worried.

**Discuss your worries with the school at the earliest opportunity - they want to help.**

www.slough.gov.uk  
**Slough**  
Borough Council

## Attendance in EYFS



## 3 Getting it right from the start

Poor attendance and punctuality, even at the earliest age, can affect achievement in later life. Children learn and develop more from birth to 5 years old than at any other time. Missing days in Early Years leads gaps in learning later.

Understanding that going to school is what we do will help make life easier in the future and also ensure your child accesses all the learning available to them.

## 6 Learning and development

Often underachievement can be linked back to poor attendance in Reception and Nursery. Never underestimate how much they are learning. A huge amount of key reading, writing and maths skills are covered.

Any gaps in attendance means they have missed new phonics sound, which makes reading hard later.

Regular attendance also boosts your child's self esteem as they can see themselves making progress and succeeding.

**Every week lost = 30 hours of learning**

## Information for Parents

### 5

#### Good Habits

Establishing good habits from the start helps children to settle more quickly into new settings and routines. Children who attend every planned session develop a feel for the rhythm of the week and gain a sense of security from some regular elements.

**Tips:** Have a regular bed time; prepare for the morning by packing a bag the night before and setting out clothes; talk together about the fun things they will do at school.

#### 4 Secure Relationships

Young children find it easier to build and maintain a range of relationships when they regularly attend nursery/school.

For some families, particularly at times of stress, the child's regular attendance at school/nursery allows parents to get other things done and helps them enjoy spending time with the child when he or she is at home.



Learn. Grow. Achieve. Flourish.

'I instruct you in the way of wisdom and lead you along straight paths.' Proverbs 4:11

## Attendance

Attendance	Days Absent	Weeks Absent
95%	9 days	2 weeks
90%	19 days	4 weeks
85%	29 days	6 weeks
80%	38 days	8 weeks
75%	48 days	10 weeks
70%	57 days	11.5 weeks





Learn. Grow. Achieve. Flourish.

'I instruct you in the way of wisdom and lead you along straight paths.' Proverbs 4:11

## Attendance

### **Authorised absence-agreed by school:**

- Parent contacts school and shares reason for absence.
- Specifies illness e.g., chicken pox – *not sick*
- Inform the office via Studybugs online platform, email or phone call **every day** of the absence.

### **Unauthorised absence-not agreed by the school:**

- If a child has an unauthorised absence in an academic year, the **parent is liable for a penalty notice.**



Learn. Grow. Achieve. Flourish.

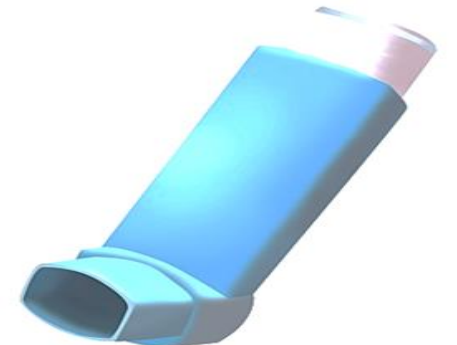
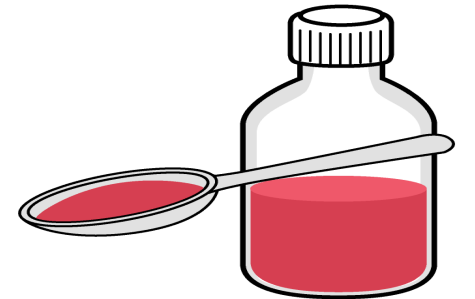
'I instruct you in the way of wisdom and lead you along straight paths.' Proverbs 4:11

# Medicines

- **Ms McMahon**
- Administration, Welfare & Communication
- Communicating about injuries occurring at school
- Procedures for medicines at school
- Procedures for inhalers at school



medicaltracker



# Food Allergies

- If your child suffers with a **food allergy** please go to our website, and follow the link to apply for a special medical diet.
- We will notify you once this has been agreed by the catering company, up until that point you will need to bring a packed lunch for your child each day.



Learn. Grow. Achieve. Flourish.

'I instruct you in the way of wisdom and lead you along straight paths.' Proverbs 4:11

## Concerns about your child's development against progress milestones

- Miss Wood
- SENDCo



Special Educational Needs  
& Disabilities



Learn. Grow. Achieve. Flourish.

'I instruct you in the way of wisdom and lead you along straight paths.' Proverbs 4:11

# St Mary's School Website

The screenshot displays the website's interface. On the left is a vertical navigation menu with a tree icon at the top and several menu items, each with a right-pointing chevron. The main content area features a dark green navigation bar with white text links. Below this is a large video player showing a wooden bridge over a stream in a lush green setting. The video player includes 'Pause Video' and 'High Visibility' controls. Overlaid on the bottom of the video is a white text box with a welcome message and the school's motto.

- Contact us >
- Find us >
- Noticeboard >
- Calendar >
- Awards >
- Translate >
- Attendance >

ABOUT US SCHOOL INFORMATION NEWS AND EVENTS PARENTS CHILDREN COVID-19 NURSERY

Pause Video High Visibility

Welcome to  
**St Mary's Church of England Primary School**  
*Learn. Grow. Achieve. Flourish.*



## Clubs

[Home](#) » [Parents](#) » [Parent support and information](#) » [Clubs](#)

[After School Clubs](#)

[Parent workshops](#)

[Breakfast and Lunch Clubs](#)



Learn. Grow. Achieve. Flourish.

'I instruct you in the way of wisdom and lead you along straight paths.' Proverbs 4:11

# Uniform

## Uniform Information

Home >> Parents >> Uniform Information

mapac.com/education/parents/uniform/stmaryceprimarieschools12ar

LOGIN/REGISTER

BASKET | 0 ITEMS

mapac®

FIND MY SCHOOL | HOW DO I ORDER? | SIZE GUIDE | DELIVERY & RETURNS | CONTACT | THE MAPAC SHOP

home > Parents > St Marys CE Primary School (Slough)

### St Marys CE Primary School (Slough)



St Marys CE Primary School  
(Slough)

Yew Tree Road  
Slough  
Berkshire  
SL1 2AR

Welcome >  
School Uniform Policy >  
FREE Delivery on orders over £50 >



### Current products for St Marys CE Primary School (Slough)



# Uniform Information

Home >> Parents >> Uniform Information



Primo Book Bag

prices from £7.32



Kit Bag

prices from £6.12



Reversible Fleece Jacket

prices from £19.30

## Winter

- Bright green sweatshirt with school logo
- Plain white shirt/polo shirt or blouse
- Black trousers, black skirt
- White/black socks or tights (no patterns)
- Sturdy Black shoes (not trainers)

# Uniform Information

Home >> Parents >> Uniform Information



## Summer

- Winter uniform or summer uniform
- Bright green sweatshirt with school logo
- Plain white shirt/polo shirt or blouse
- Black trousers, black skirt
- White/black socks or tights (no patterns)
- Sturdy Black shoes (not trainers)



Learn. Grow. Achieve. Flourish.

'I instruct you in the way of wisdom and lead you along straight paths.' Proverbs 4:11

## Uniform: PE Kit



Velcro Plimsolls





Learn. Grow. Achieve. Flourish.

'I instruct you in the way of wisdom and lead you along straight paths.' Proverbs 4:11

# Health & Safety

## Jewellery





Learn. Grow. Achieve. Flourish.

'I instruct you in the way of wisdom and lead you along straight paths.' Proverbs 4:11

## Communication

- Tapestry
- An online learning journal
- App and browser version
- We use it to record children's learning
- We will post pictures of your child with feedback about how they are learning
- Sign Tapestry form



TAPESTRY  
ONLINE LEARNING  
JOURNAL



Learn. Grow. Achieve. Flourish.

'I instruct you in the way of wisdom and lead you along straight paths.' Proverbs 4:11

## Communication

- Email office: [officestaff@stmarys.slough.sch.uk](mailto:officestaff@stmarys.slough.sch.uk)

### Class email address:

- **Poppy Class** - [poppy@stmarys.slough.sch.uk](mailto:poppy@stmarys.slough.sch.uk)
- **Daffodil Class** - [daffodil@stmarys.slough.sch.uk](mailto:daffodil@stmarys.slough.sch.uk)
- **Bluebell Class** - [bluebell@stmarys.slough.sch.uk](mailto:bluebell@stmarys.slough.sch.uk)

# Pupil Premium Grant

## What is it?

- Pupil Premium is funding to improve education outcomes for disadvantaged pupils in schools in England.
- Pupil Premium is not a personal budget for individual pupils and schools are not required to spend all of the allocated grant on eligible pupils.
- Families must apply if they think they may be entitled.
- Funding is secured for the remaining time that the child attends primary school.

## How is it used at St Mary's?

- We use our Pupil Premium to support children in all aspects of their education including free tuition and resources.
- Pupil Premium can also help support eligible families with uniform and trips, where requests are made.
- Laptops to enable access to online homework platforms, such as Reading eggs and Mathletics.
- Local authority have issued vouchers over the holiday periods.

# Free School Meals and Pupil Premium

- ▶ If your child is eligible for the Pupil Premium Grant they will have access to Free School Meals for their time at primary school.
- ▶ All Reception and KS1 pupils qualify for Universal School Meals – those eligible for PPG will continue to receive FSM in Years 3-6.

# Is my child eligible for PPG?

You will be able to claim FSM and PPG for your child if you receive one of the following benefits:

- ▶ Universal Credit (provided you have a net income from employment of no more than £7400 per year). For more information on how the government calculates your earnings from employment whilst claiming Universal Credit, please check the "Eligibility under Universal Credit" section below.
- ▶ Income Support
- ▶ Income based Jobseeker's Allowance
- ▶ Income related Employment and Support Allowance
- ▶ Support under Part VI of the Immigration and Asylum Act 1999
- ▶ The guarantee element of Pension Credit
- ▶ Child Tax Credit (provided you're not also entitled to Working Tax Credit and have an annual gross income of no more than £16190)
- ▶ Working Tax Credit run-on - paid for four weeks after you stop qualifying for Working Tax Credit

# How do I apply?

- ▶ All applications for FSM and PPG in Slough must go through Slough Borough Council.

This can be done in two ways

1. Filling in a **paper copy** and handing it to the school office - they will process this and inform you when they have a response from the council.
2. Apply online through the **SBC website** and they will contact you at the school - this is a **quicker process**

[Free school meals - Slough Borough Council](#)

You will need the following information to apply:

- your **National Insurance number**, or if you are an Asylum Seeker your **National Asylum Support Service number** (NASS)
- your personal information including your **date of birth** and **full legal name**
- your **child's name and school**
- details of the **benefits** you currently receive



Learn. Grow. Achieve. Flourish.

'I instruct you in the way of wisdom and lead you along straight paths.' Proverbs 4:11

# School Lunch

**The government fund a free lunch for every child in Reception and KS1**

## **Benefits:**

- Hot
- Nutritious
- Balanced Meal
- Table Manners
- Social Skills
- Fine Motor Skill Development
- Teach them how to use a knife and fork
- More inclined to try different foods
- Correct portion size



Learn. Grow. Achieve. Flourish.

'I instruct you in the way of wisdom and lead you along straight paths.' Proverbs 4:11

## Health & Safety

- According to Highway Code Rule 243, drivers **MUST NOT** park near or drop off at the school entrance.





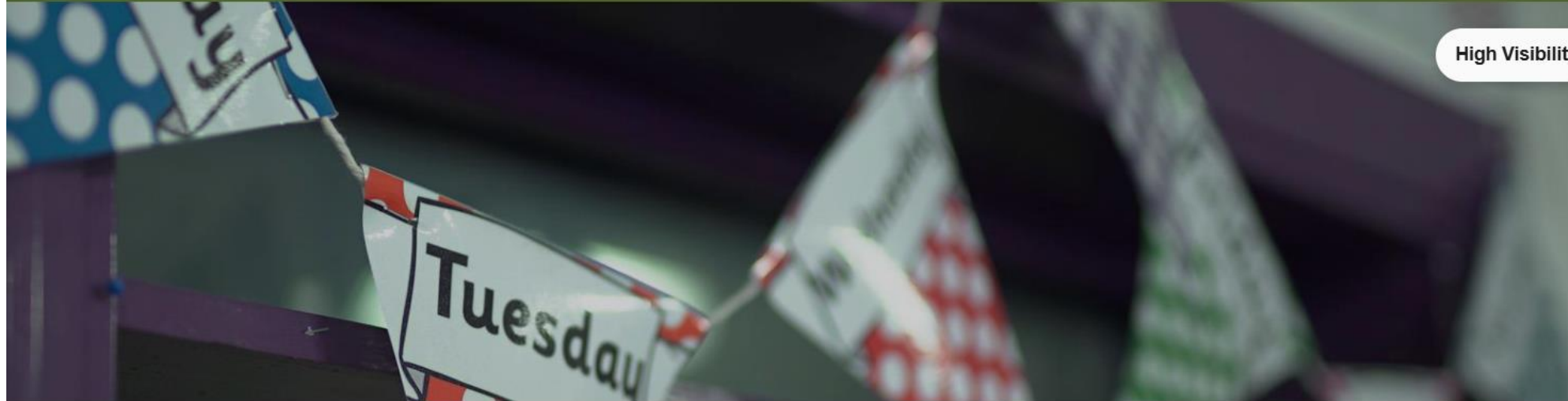
Learn. Grow. Achieve. Flourish.

'I instruct you in the way of wisdom and lead you along straight paths.' Proverbs 4:11

# School Lunch

[HOME](#) [ABOUT US](#) [SCHOOL INFORMATION](#) [NEWS AND EVENTS](#) [PARENTS](#) [CHILDREN](#) [COVID-19](#) [NURSES](#)

High Visibility



## Lunch Menus and Snacks

[Home](#) » [Parents](#) » [Lunch Menus and Snacks](#)

The government currently provides Universal Free School Meals for all children in the infant years (Reception year to year 2). This is paid to schools through the local authority and parents are not required to contribute.

Once your child reaches KS2 age (Year 3 - Year 6), parents are required to pay for their child's meals. They must pay through parentpay.

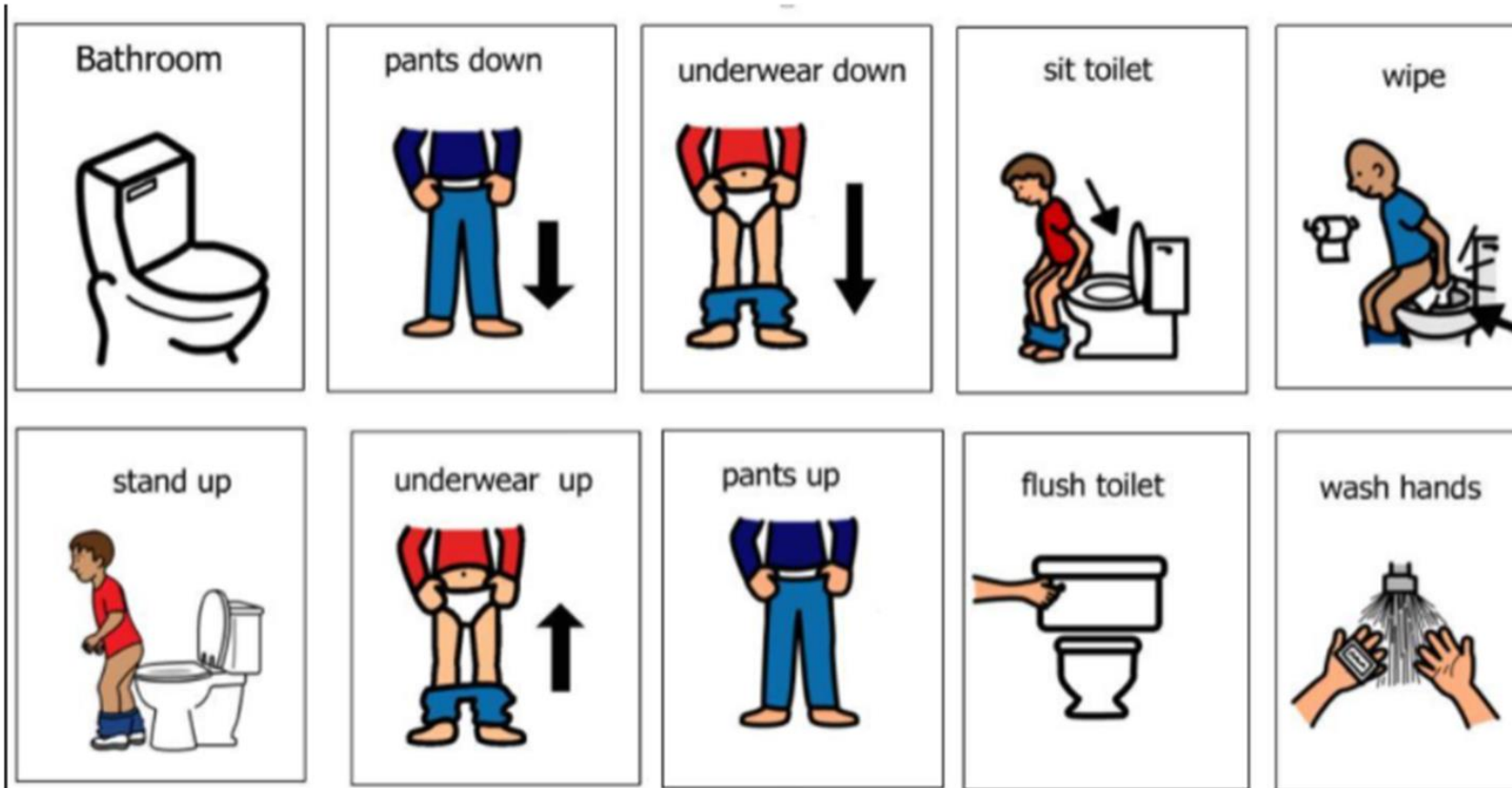
## Lunch Menu

**Spring/Summer Menu Week 3**  
28<sup>th</sup> April, 19<sup>th</sup> May, 9<sup>th</sup> June, 30<sup>th</sup> June, 21<sup>st</sup> July, 11<sup>th</sup> Aug, 1<sup>st</sup> Sept, 22<sup>nd</sup> Sept, 13<sup>th</sup> Oct, 3<sup>rd</sup> Nov 2025

WEEK THREE	PIZZA PARTY MONDAY	WORLD TUESDAY	ROAST WEDNESDAY	FAVOURITES THURSDAY	FISH FRIDAY
<b>Main Meal Option</b>	Margherita Pizza & Tomato Pasta Salad 	Beef Lasagne & Garlic Bread 	Roast Chicken Gravy, Stuffing & Roast Potatoes 	Chicken Fajita Pasta 	MSC Fish Fingers & Chips 
<b>Halal Option</b>	Margherita Pizza & Tomato Pasta Salad 	Halal Red Tractor Beef Lasagne & Garlic Bread 	Roast Chicken, Gravy Stuffing & Roast Potatoes 	Halal Chicken Fajita Pasta 	MSC Fish Fingers & Chips 
<b>Vegetarian Option</b>	Cheese Fian & Home -Baked Potato Wedges 	Vegetable Lasagne & Garlic Bread 	Quorn Grill, Gravy, Stuffing & Roast Potatoes 	Cheesy Tomato Pasta Bake 	Crispy Vegetable Fingers & Chips VG 
<b>Vegetables</b>	British Red Tractor Garden Peas, Baked Beans 	Broccoli, Cauliflower & Carrots 	Broccoli, Carrots & Sweetcorn 	British Red Tractor Garden Peas or Sliced Carrots 	British Red Tractor Garden Peas, Baked Beans 
<b>Baked Jacket Potatoes</b>	Cheese Wrap 	Cheese sandwich 	Cheese Sandwich 	Jacket Potato with Cheese or Beans 	Tomato & Basil Pasta 
<b>Dessert</b>	Strawberry Mousse & Fruit Slices 	Chocolate Cookie & Orange Wedges VG 	Vanilla Cupcake 	Chocolate Crunch "Concrete" VG 	Ice Cream 

England's target for 'free sugar' intake for your child  
Recommended fruit and vegetable portions (used per individual using School Food Standards)  
On average our desserts do not exceed a third of a child's recommended 'free sugar' intake.

# Fully Toilet Trained





Learn. Grow. Achieve. Flourish.

'I instruct you in the way of wisdom and lead you along straight paths.' Proverbs 4:11

# Welcome Pack



Learn. Grow. Achieve. Flourish.

'I instruct you in the way of wisdom and lead you along straight paths.' Proverbs 4:11

## Reception timings

### Monday to Thursday:

**School starts : 8.30 a .m.(Gate opens at 8.20 a.m.)**

**School ends :3.30pm (Gate opens at 3.25 p.m.)**

### Friday :

**School starts : 8.30 a .m.(Gate opens at 8.20 a.m.)**

**School ends :1.30pm**





Learn. Grow. Achieve. Flourish.

'I instruct you in the way of wisdom and lead you along straight paths.' Proverbs 4:11

## **Start Dates and timings for Children:**

To have a smooth transition to reception, children will have a soft start in September.

**Thursday 4<sup>th</sup> September 8.30 a.m. to 1.30 ( 15 children per class)**

**Friday 5<sup>th</sup> September 8.30 a.m. to 1.30 p.m. ( 15 children per class)**

**Monday 8<sup>th</sup> September 8.30 a .m. to 1.30 p.m. (All children)**

**Tuesday 9<sup>th</sup> September 8.30 a.m. to 3.30 p .m. (All children)**



Learn. Grow. Achieve. Flourish.

'I instruct you in the way of wisdom and lead you along straight paths.' Proverbs 4:11

# Thank you for coming!

We look forward to meeting you and your child to our Stay and Play session **at 1.30pm on Tuesday 1st July.**

During the session, you will meet your child's class teacher and will have the opportunity to visit the classroom also. **The session will end at 2.30 p.m.**