

## ATTENDANCE AT ST MARY'S CE PRIMARY SCHOOL

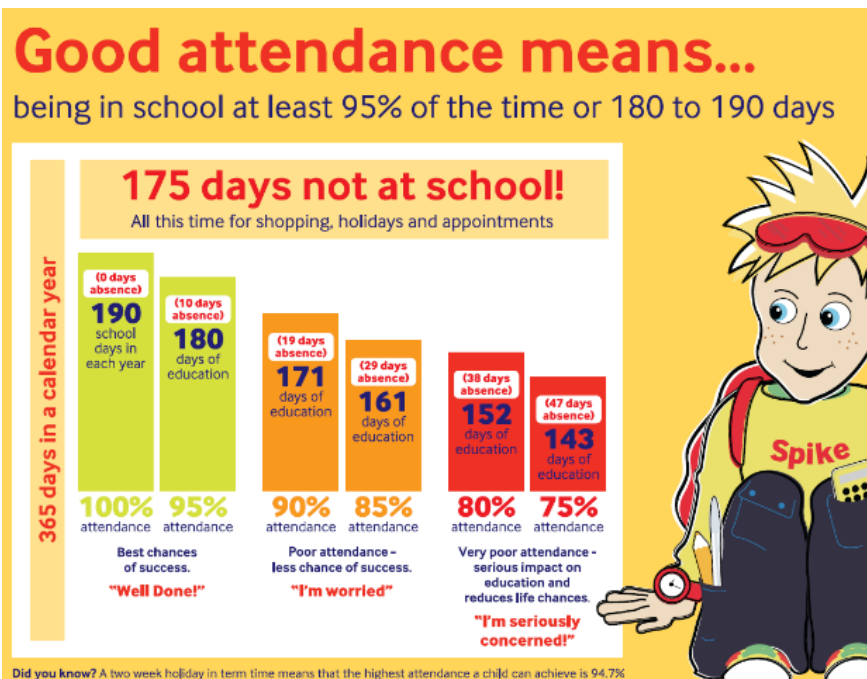
### Our school attendance target is 96%

At St Mary's CE Primary School we are working hard to ensure children access a high quality education.

Do not let your child miss out by poor attendance and lateness.

It is essential that your child attends school on time every day in order to gain the greatest benefit from their education.

Your child's years at primary school are the most important time to begin their learning. It is therefore important to understand that when your child has a place, we expect them to attend every day. We also monitor nursery attendance and Reception attendance on a weekly basis, as good attendance is important from the start of school life!



Being absent or late can seriously:

- Stop your child's progress and create gaps in their learning, every day absent from school is a day of lost learning.
- Affect your child's friendships, it is harder for them to socialise and be part of a team.



- Embarrass your child if they are late and they have to walk into an already settled classroom and have to catch up.
- Cause bad habits which are hard to break - we can cope with minor illnesses like coughs and colds and if ever there was problem, we would contact you as soon as possible.

### School Procedures

If your child is absent from school, please telephone the school or send us a message on Parentmail with a reason for their absence.

The school follows up on all absences. If you do not contact us we will contact you.

Please ensure all medical appointments are where possible, taken out of school time. Opticians are open on Saturdays and Sundays and many doctors' surgeries now offer evening appointments.